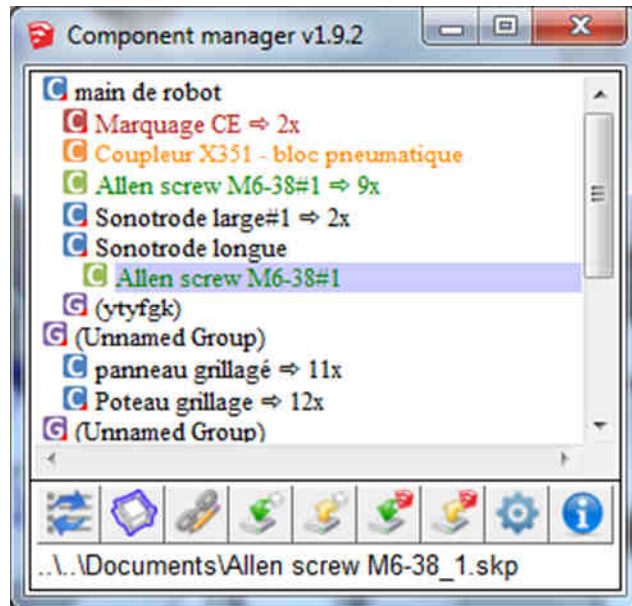


COMPONENTS MANAGER

-- Help file --

Created by BGSketchup on December, 2013. Plugin revision used in this help file = 1.10.0



Why to use it ?

This plugin will help you managing components on your model. Even more with you use to save them on your component, using right-click function "Save as".

It will help you to save or upload every components in your model, and also manage revisions of each of them.

Main functions:

- Save all components, Upload all component at same time !
- Tell you if components in your model are older or newer than file.
- Change link to a component to a relative link to your component.
- Manage revisions of your saved components.
- Allow you to rename component definition.

How to install:

- Sketchup 8 or earlier : rename ".rbz" file in ".zip" file, uncompress and save file in SU install folder / Plugins
- Sketchup 2013 : click on window/preference, then "extension", then "install extension" and choose ".rbz" file

Note : you may need to restart Sketchup to make it works.

Main interface :

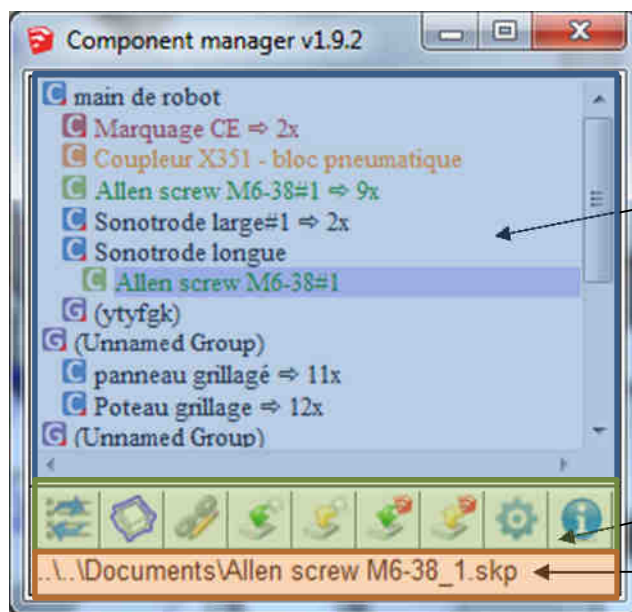
To access the main interface window, click, in Sketchup menus, on Plugins/BGSketchup/Components manager.



Also you can add the plugin toolbar, click, in Sketchup menus, on View/Toolbars. Tick "BGSketchup-Composants". You will see a new toolbar :



Plugin window :



List of components and groups in your model
Right clicking on it will show you a context menu with some operation

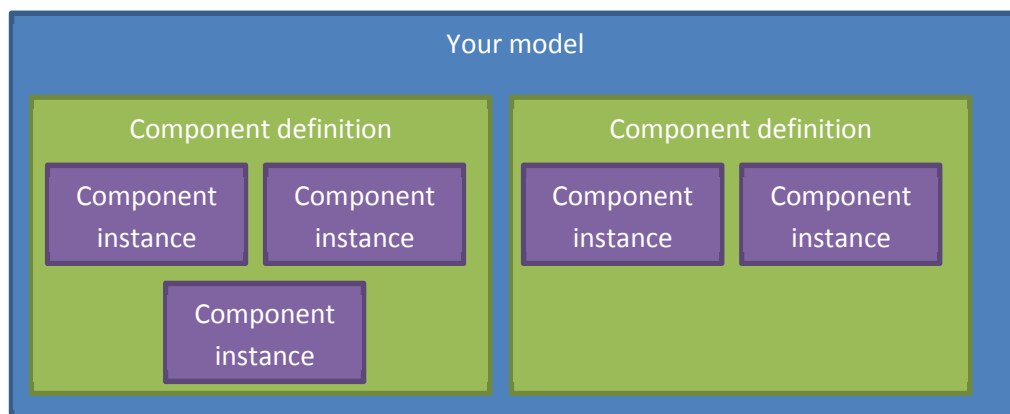
Action buttons

Information bar

Before to start : Component explanation

Before to start using this plugin, it may be relevant to understand how component are working on Sketchup.

The following picture show how the component work in Sketchup



Each time you create a component (by right clicking on and choose “make a component”) Sketchup creates a component definition, in which the design of your component is defined, and a component instance, which is the component you will see in your model. Every time you copy a component, it actually creates a new instance but the component definition is the same as previously defined. The component instance defines only where to place, how to transform (scale...) the component definition to reflect the component instance the user wants. Therefore, you could reduce the size of your model by creating a component for very complex elements that you have multiple times in your model.

Each component definition could be saved in a file using the right click menu on a component instance and choose “Save as”. It could be reloaded in the same way by choose “Reload”.

The plugin just adds some attributes to your component to know when you modify/create it, in order to check the difference between component in your model and component in the file you saved.

The plugin also attaches to the component a relative path to the saved file. See section “Relative link system” below to understand how this works.

Note that the component older/newer detection system won’t work until you save the component while having the plugins installed.

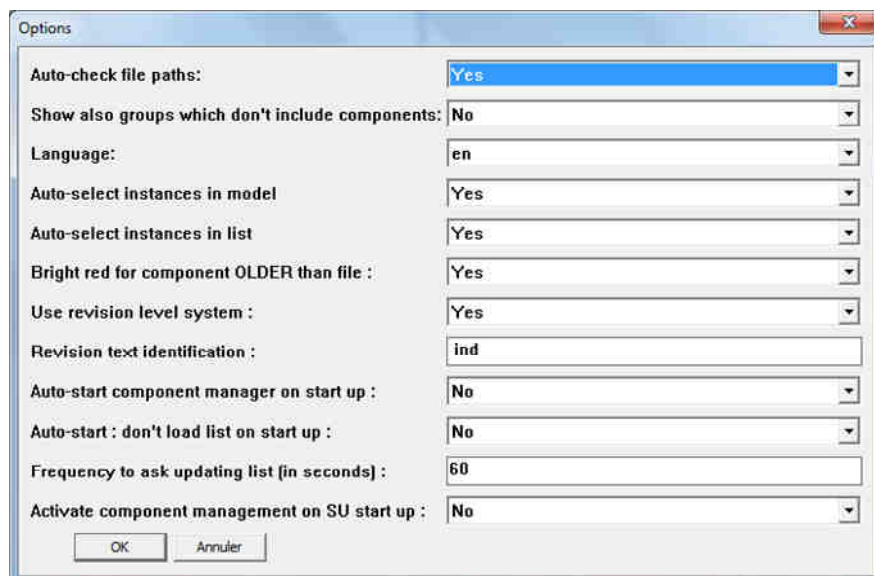
Note that if you save the component by right clicking on it in Sketchup and choose “Save as”, the plugin will update the relative path too.

First step : options !

Before to start using you plugin, the best is to set up options.

Please note that plugin is saving a file in your documents folder to save options. Name of the file is “BGSketchup_Composants.ini”. You can see inside the file with your favourite editor, but please don’t modify it. If you have some issue with options saving, it may be relevant to delete this file and start the plugin again.

Options menus can be accessed from the main interface by clicking on this button . It opens this window :



Options explanations :

Auto-check file path

Choose “Yes” if you want the plugin to check components path and check if they are older or newer than component in model.

Show also groups which don't include components

Choose “No” if you want the plugin to show in the list only the groups which contains one or more component. If “Yes” is chosen, all groups in your model will be shown.

Language

Choose, within the list, your favourite language. The plugin choose use OS language by default or English if the translation for your language is not found.

Auto-select instance in model

Choose “Yes” if you want the plugin to show in the model all the component instances of the component selected in the list.

Auto-select instance in list

Choose “Yes” if you want the plugin to show in the list the component selected on your model

Bright red for component OLDER than file

The the list of component, when component file date differs from model's component modification date, the component is show in red. With this option you can choose if to outline it in bright red (compared to dark red) if component in your model is older than file.

Use revision level system

Choose “Yes” if you to use the revision level system (see below for more details).

Revision text identification

Put here the text that identify the revision level of your components when saved on computer.

Auto-start component manager on start up

Choose “Yes” if you want the plugin window to be displayed when you start Sketchup.

Auto-start don't load the list on start up

Choose “Yes” if you want the plugin to update the list when you start Sketchup, if plugin window is shown.

Frequency to ask updating the list (in seconds)

Put here the number of seconds before a prompt is shown to update plugin list, when you rick clicked on a component and choose action “Edit”.

Activate component management on SU start up

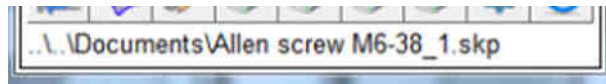
Activate the component management even if the window of the plugin is not shown. By choosing “Yes”, even if window is not display, just start Sketchup and the plugin will set as attribute the modification date of any component you may change. By chosing “No”, if plugin window is not show,

Relative link system :

By using the plugin, each time you save a component, the plugin associate an attribute which define the relative path the component.

This function is useful if you want to make your model from one folder to another one with keeping links between model and components, in order to upload it or save it.

The path to the component is shown in the "Information bar" :




A relative link is a link between the folder where your model is stored and the folder where your component is stored. So it is made a multiple characters prior to file name that help to find the component.

In the example above, to reach the component, we have to go up in folder tree by 2 times and then we have to go to folder "Documents" then we have the file "Allen screw M6-38_1.skp". This is a relative link.

In example below, the file are saved with an absolute path :



To change the link to the component and make it relative, you have to select it in the list and click button .

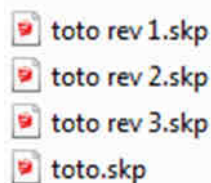
The plugin ask you for a new path, and if it can, it will make a relative path to it.

Revision management :

Imagine a model "A.skp" with component named "toto" saved on hard drive ("c:/toto.skp").

Imagine that each time you make a modification to the component "toto", you want to keep history of the file, so you save it with a revision level, for example "toto rev 1.skp"

So in your folder, you may have files like :



And when you open your model (A.skp), you want to upload the latest revision of "toto" component, so "toto rev4.skp".

Then, you just have to choose option "Use revision level system" and the plugin will upload only the last revision !

When saving (only by right-clicking on the component in the list), it asks you if you want to create a new revision, ie "toto rev4.skp".

The text to define revision level can be chosen in options menus:



Pay attention to a following rules :

1. Spaces are important: if revision text is " rev" (with a space before), "totorev1.skp" is not the revision 1...
2. Revision level can be float number, but better to use rounded number (because "toto rev 1.3.skp" will new newer than "toto rev 1.11.skp", as $1.3 > 1.11$)
3. In file name, if you put letter instead of figure ("rev A") it may crash...
4. The extension of file will always be ".skp", as Sketchup save components as ".skp".